

FIBRECLENE

REINFORCED WALL CLADDING SYSTEMS

PURPOSE:

Fibreclene jointless wall systems consist of either Epoxy (E) or Polyester (P) resin bound glass fibre reinforcement, applied in situ to structural walls and surfaces to provide a jointless, impact resistant, hygienic surface cladding.

PROPERTIES:

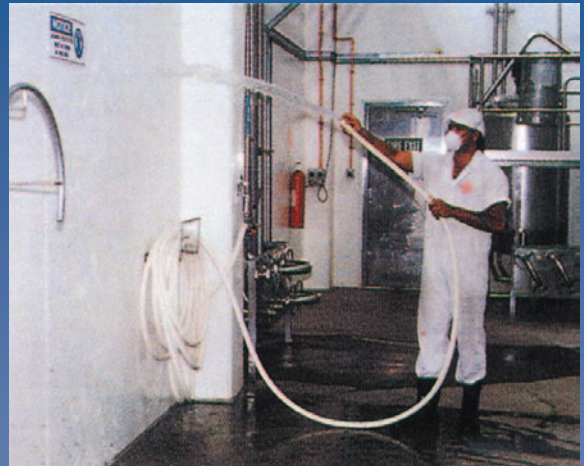
- Good stain and chemical resistance - short application period
- Excellent impact and abrasion resistance.
- Easily cleaned
- May be applied to a wide variety of substrates.
- Easily repaired and maintained.
- Non - toxic.
- Will not peel or flake.
- Finish - Semi Gloss
- White, pastel colours to order.
- Resistant to fats, oils, most solvents, moderate strength acids and alkalis.

SUGGESTED USES:

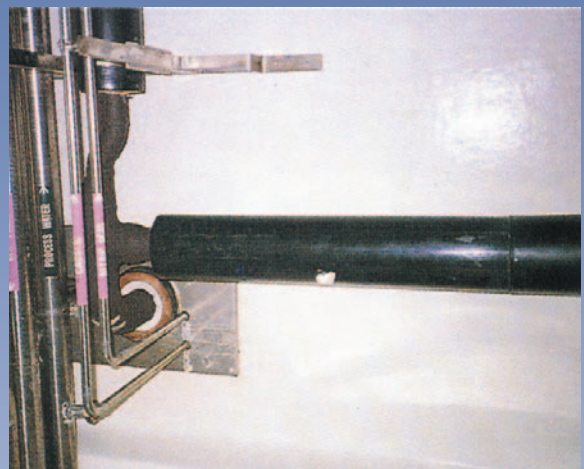
Food storage and processing areas.
Freezing works, abattoirs, slaughter houses.
Dairy factories.
Brine tanks.
Chemical processing plants.
Chemical storage bunds.

NOT RECOMMENDED:

- Application when humidity exceeds 80% RH
- Application of Fibreclene P within close, proximity to foodstuffs (use Fibreclene E).
Chlorinated solvents.
Extended exposure to caustic.



FIBRECLENE HYGIENIC WALL CLADDING



FIBRECLENE AS A CHEMICAL RESISTANT WALL
CLADDING

Preferred Applicator

FIBRECLENE

REINFORCED WALL CLADDING SYSTEMS

FIBRECLENE

NUPLEX manufacture two fibreglass reinforced wall cladding systems formulated to comply with regulatory authority requirements. They are applied in situ to provide a jointless, impact resistant hygienic surface following substrate contours and profiles.

TECHNICAL SERVICES

NUPLEX Industries provide a technical advisory and consultation service to all specifiers and users from offices located in Sydney, Melbourne and Brisbane.

FIBRECLENE P Composition and Properties

- A fibreglass reinforced wall cladding system using Polyester resin as the laminating medium.
- Short application period.
- Applied by roller with CSM Matt and surfacing tissue.
- Follows columns and other profiles.
- Excellent impact and abrasion resistance. Good stain and chemical resistance. Non toxic.
- May be applied to a wide variety of substrates.
- Easily repaired and maintained. Will not peel or flake.
- Semigloss finish.

Colours

White, pastel colours to order (Minimum quantities)

TYPICAL APPLICATIONS

- Food processing and storage plants
- Pharmaceutical filling and processing areas
- Freezing works, abattoirs, slaughter houses.
- Dairy factories.
- Brine tanks.
- Chemical processing plants.
- Hospital kitchens
- Operating theatres
- Fast food operating

FIBRECLENE E (EPOXY) Composition and Properties

- A fibreglass reinforced wall cladding system incorporating water based epoxy resins which provide a full gloss finish.
- Roller applied.
- May be applied to a damp surface.
- Excellent chemical resistance.
- Non toxic, non flammable.
- May be applied to a wide range of new and existing substances to follow contours.
- Low odour, will not contaminate foodstuffs.
- Easily repaired and maintained. Will not peel or flake.

Colours

White, may be pigmented. Pastel colours to order.

TYPICAL APPLICATIONS

- Food processing and storage plants
- Pharmaceutical filling and processing areas
- Freezing works, abattoirs, slaughter houses.
- Dairy factories.
- Brine tanks.
- Chemical processing plants.
- Cool stores.
- Hospital hygiene areas
- Commercial kitchens

FIBRECLENE V.E. (VINYL ESTER) Composition and Properties

- A fibreglass reinforced wall cladding system incorporating vinyl ester resin as the laminating medium.
- Follows complex curves and shapes to provide a smooth, impervious easily cleaned surface.
- Short application period.
- Excellent chemical resistance at both ends of the p.H. scale i.e. acidic and alkali compounds.
- Semigloss finish.
- Excellent impact and abrasion resistance.
- Easily repaired and maintained if required.
- May be applied to a variety of substrates.
- Will not peel or flake .
- Laminate thickness approx 1.75mm(0.070”).
- Special grade available to resist chlorine products.
- High heat resistance up to 100degC.

Colours

Normally clear, however, white and pastel colours are available to order although not recommended when used in demanding environments.

TYPICAL APPLICATIONS

- Chemical storage and bund areas
- Effluent sumps
- Chemical processing areas.
- Chemical tanks.

Custom formulated Coatings:

In addition to a versatile standard product range, special systems may be formulated and developed for specific application situations. With 30 years experience in the industry, NUPLEX are able to provide a tailor made solution for most surface coating problems.